

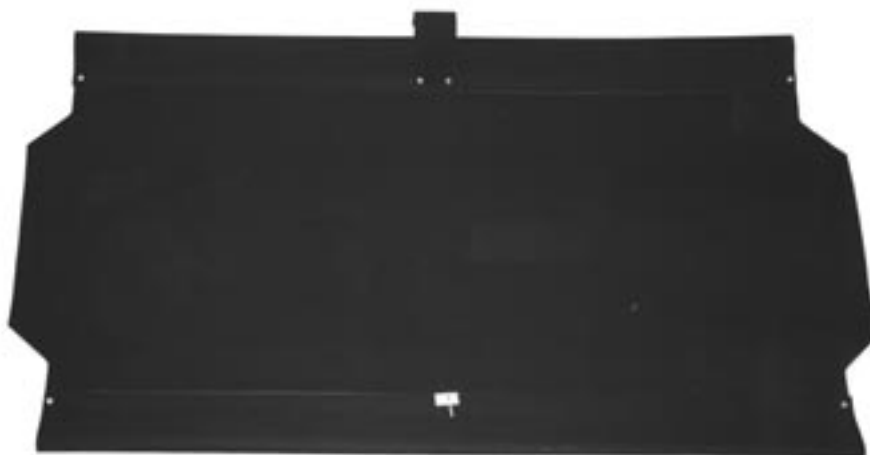
PIT CUSHION ASSEMBLY QUICK REFERENCE



12-862580-000
CUSHION ARM REBUILD KIT



12-862839-000
CUSHION MOUNT W/BRG



12-862167-000
PIN CURTAIN



12-252346-000
FOLLOWER LINK



12-252351-000
FOLLOWER
LINK BUSHING



12-252365-000
ROD END



12-252060-000
END FITTING



12-252268-000
CURTAIN ROD
BRKT-RH



12-252269-000
CURTAIN ROD
BRKT-LH



12-252069-000
LINK



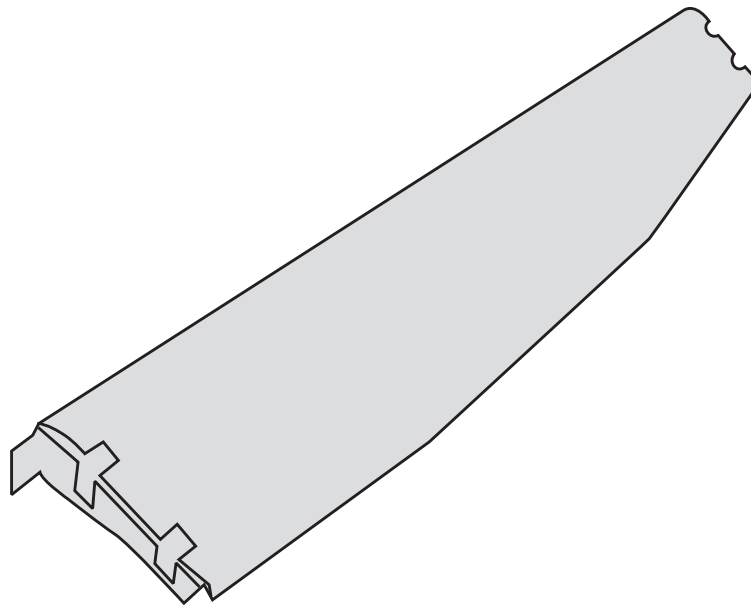
12-252359-000
LINK PLATE

PIT CUSHION ASSEMBLY



Call 631-582-5450 in NY or Fax 631-582-5875. Outside the NY area, 1-800-366-4JCP.

Section 5 Pit Cushion Assembly



PIT CUSHION ASSEMBLY

PIT CUSHION ASSEMBLY

ITEM	PART NUMBER	DESCRIPTION	ITEM	PART NUMBER	DESCRIPTION
1	10-002001-000	HEX HD SCREW	40	11-420094-000	OILITE BEARING
2	10-002006-000	HEX HD SCREW	41	11-603114-000	CABLE TIE
3	10-009001-001	SOC HD CAP SCREW	42	12-100185-036	SPACER
4	10-229601-000	X-WASHER PIN	43	12-250011-002	SPACER
5	10-229602-000	X-WASHER PIN	44	12-250011-003	SPACER
6	10-386092-000	SPACER	45	12-250076-002	FIBRE WASHER
7	10-386096-000	SPACER	46	12-250152-000	ROD END DISC
8	10-386115-000	SPACER	47	12-250153-000	ROD END CAP
9	10-424001-000	BEARING-GROOVED	48	12-250154-000	CURTAIN ROD
10	11-001344-000	HEX HD SCREW	49	12-250189-000	RUBBER BUSHING
11	11-001346-000	HEX HD SCREW	50	12-250248-000	BEARING
12	11-001347-001	HEX HD SCREW	51	12-250823-000	HOOK ASSY
13	11-001354-001	HEX HD SCREW	52	12-252005-002	RH MOUNT (NOT SHOWN)
14	11-001394-001	HEX HD SCREW	53	12-252005-003	LH MOUNT BRKT
15	11-001508-000	HEX HD SCREW	54	12-252006-000	U BRACKET
16	11-002094-001	HEX HD SCREW	55	12-252012-PVC	PVC FACING
17	11-002125-000	HEX HD SCREW	56	12-252060-000	ROD END
18	11-005514-000	SOC HD CAP SCREW	57	12-252061-000	CURTAIN ROD RETAINER
19	11-107110-000	SCREW	58	12-252069-000	LINK
20	11-121519-001	HEX NUT-NYLON CAP	59	12-252073-000	SUPPORT ARM
21	11-121523-000	HEX NUT-NYLON CAP	60	12-252173-000	PIT CUSHION SHOCK
22	11-125005-000	HEX NUT	61	12-252268-000	CURTAIN ROD BRKT RH
23	11-125209-000	HEX JAM NUT-RH	62	12-252269-000	CURTAIN ROD BRKT LH (SHOWN)
24	11-125259-000	HEX JAM NUT-LH	63	12-252344-000	CUSHION BRACKET
25	11-170010-000	NYLOCK NUT	64	12-252346-000	FOLLOWER LINK
26	11-170011-000	NYLOCK NUT	65	12-252348-000	ELEVATOR PLATE
27	11-170012-000	NYLOCK NUT	66	12-252349-000	SPACER
28	11-170015-000	NYLOCK NUT	67	12-252350-000	BUSHING
29	11-170016-000	NYLOCK NUT	68	12-252351-000	FOLLOWER LINK BUSHING
30	11-180006-000	CLAMP NUT & SPRING	69	12-252352-000	CUSHION ARM BOLT
31	11-190006-000	PLAIN WASHER	70	12-252359-000	LINK PLATE
32	11-190014-000	PLAIN WASHER	71	12-252360-000	D-WASHER
33	11-190018-000	PLAIN WASHER	72	12-252364-002	TUBE
34	11-190511-001	PLAIN WASHER	73	12-252364-003	TUBE
35	11-190512-001	PLAIN WASHER	74*	12-252365-000	ROD END
36	11-190520-001	PLAIN WASHER	75	12-862167-000	PIN CURTAIN
37	11-195010-000	LOCKWASHER	76	12-862578-000	PIT CUSHION
38	11-195016-000	LOCKWASHER	77	12-862839-000	CUSHION MOUNT W/BRG.
39	11-230005-001	X-WASHER			

* NOTE: Items #44 & #50 are not required with uniball type rod end.

KITS AVAILABLE:

12-860660-000 MINI CUSHION ARM REBUILDING KIT

12-862015-000 ROD END CONVERSION KIT

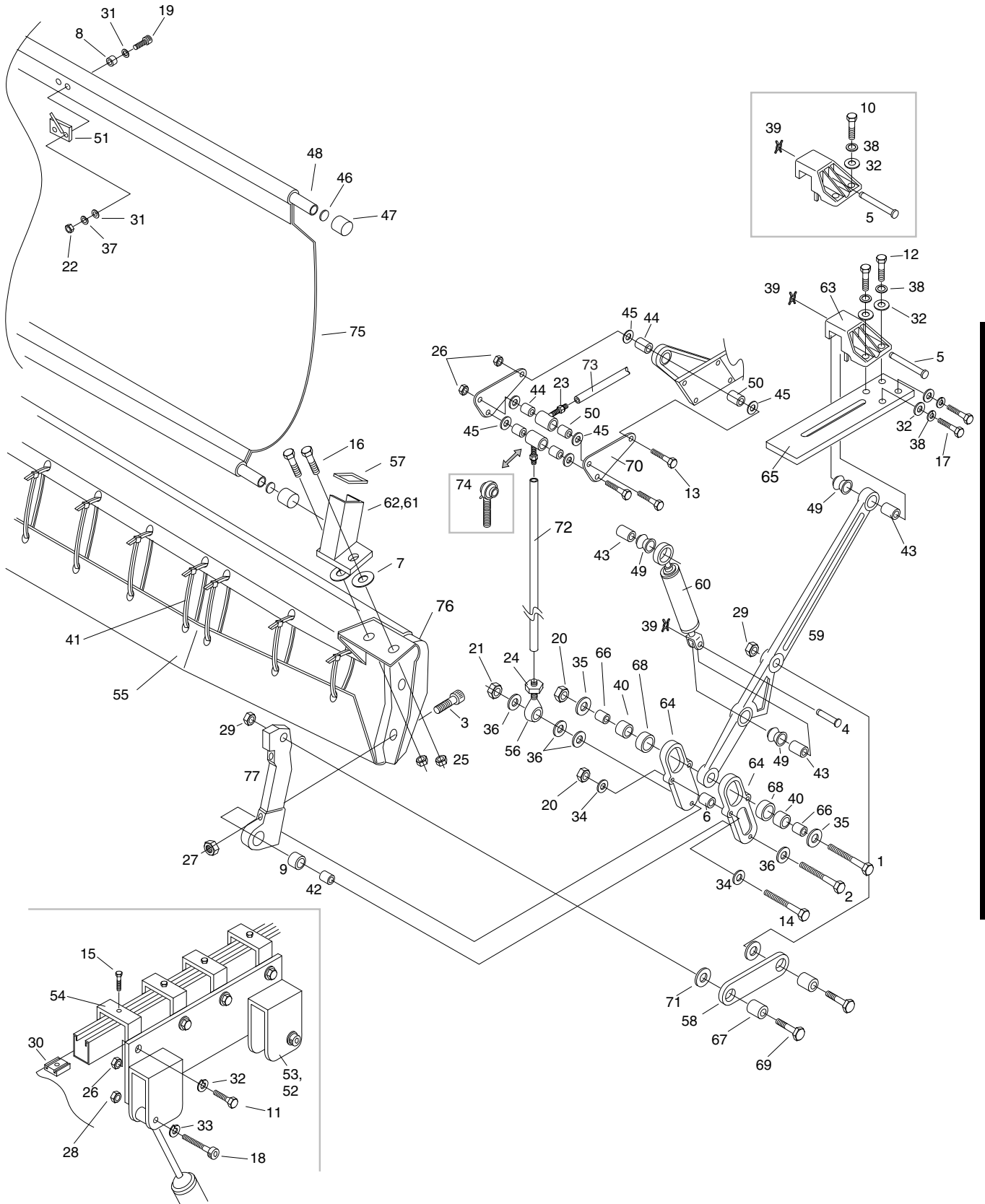
12-862580-000 CUSHION ARM REBUILDING KIT

12-862938-000 PIT CUSHION TUNE-UP KIT



Call 631-582-5450 in NY or Fax 631-582-5875. Outside the NY area, 1-800-366-4JCP.

PIT CUSHION ASSEMBLY



PIT CUSHION ASSEMBLY

Call 631-582-5450 in NY or Fax 631-582-5875. Outside the NY area, 1-800-366-4JCP.

